

### Introduction

The ESTEem Models 210C and 210M have a USB programming port (Figure 1) for basic configuration such as setting the IP address, viewing the log files or resetting to factory defaults. More advanced programming features such as setting modes of operation and frequency are done through the web interface in the 210 series.

There are 3 steps to setting up the USB Programming Port on the 210 Series.

1. Plug the included USB cord into the USB Programming Port on the modem and then into your computer.
2. Locate and install the USB Driver on the included Resource CD or download the driver at <http://www.esteem.com/fview.src?ID=782&14509>
3. Locate and install a serial terminal program. (i.e. HyperTerminal, PuTTY, Tera Term)



Figure 1: USB Programming Port

### USB Driver Installation

The ESTEem Model 210 USB driver can be downloaded from either the ESTEem web site ([www.esteem.com](http://www.esteem.com)) or the ESTEem Resource CD. The driver file (esteem\_usb\_serial.inf) must be first copied to any folder on your local computer. The installation procedure will be different depending upon your operating system:

#### Windows XP

The ESTEem USB Serial device will show as an unknown USB device when attaching the Model 210 to your computer. When prompted for the location of the USB driver, direct your computer to the “esteem\_usb\_serial.inf” file location that you saved previously. The driver will create a USB/Serial device that can be viewed on the Device Manager under “Ports” (see Figure 2)

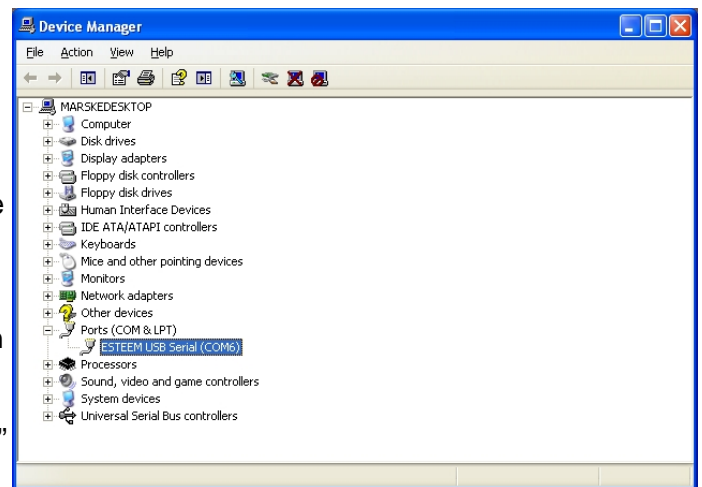


Figure 2: USB Communications Port Assignment

*Note: Please the port number assigned to the ESTEem USB Device (Figure 2 – “Com6” Assigned) as it will vary from computer to computer and will be needed for the Terminal Interface configuration.*

#### Windows Vista, Windows 7 and Windows 8

If your Windows Vista, 7 or 8 computer is configured to ask for the device driver for peripherals when installed, you can use the instructions listed above for Windows XP. If configured to automatically install new drivers, the installation will show as failed. To correct, open the Device Manager (Figure 2) on your computer and ESTEem USB Serial device will be show with a yellow indicator. Highlight the ESTEem USB device with a Right mouse click and select update driver. Point the update path to the “esteem\_usb\_serial.inf” file location that you saved previously to complete the installation.



### Terminal Interface

The ESTeem USB driver creates a serial device on your computer that can be interfaced using any serial terminal program. Windows XP® and earlier operating systems contained the serial terminal program HyperTerminal that can be configured for accessing the 210 series modem. Later versions of the Windows operating system (Vista, Windows 7 and Windows 8) removed the HyperTerminal, but a Free terminal program such as PuTTY can be downloaded at the following URL: <http://www.putty.org>

### Terminal Configuration

Configure the port settings on the ESTeem USB Serial device to the communications port number listed in the Device Manager (Figure 2). The serial port should be configured for 115,200 bps, 8 data bits, None Parity, 1 Stop bit, Hardware flow control (Figure 3).

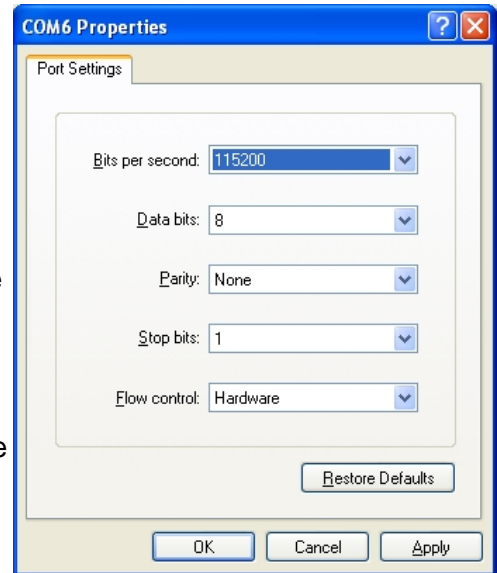


Figure 3: Port Configuration

Once the serial port has been configured, press the Enter key on your keyboard to show the sign-in display. The Username and Password for the serial interface is the same as the log-in for the web interface. If at default values, both the Username and Password will be “admin” (lowercase without the parenthesis). The configuration screen (Figure 4) should now be displayed and ready for use.

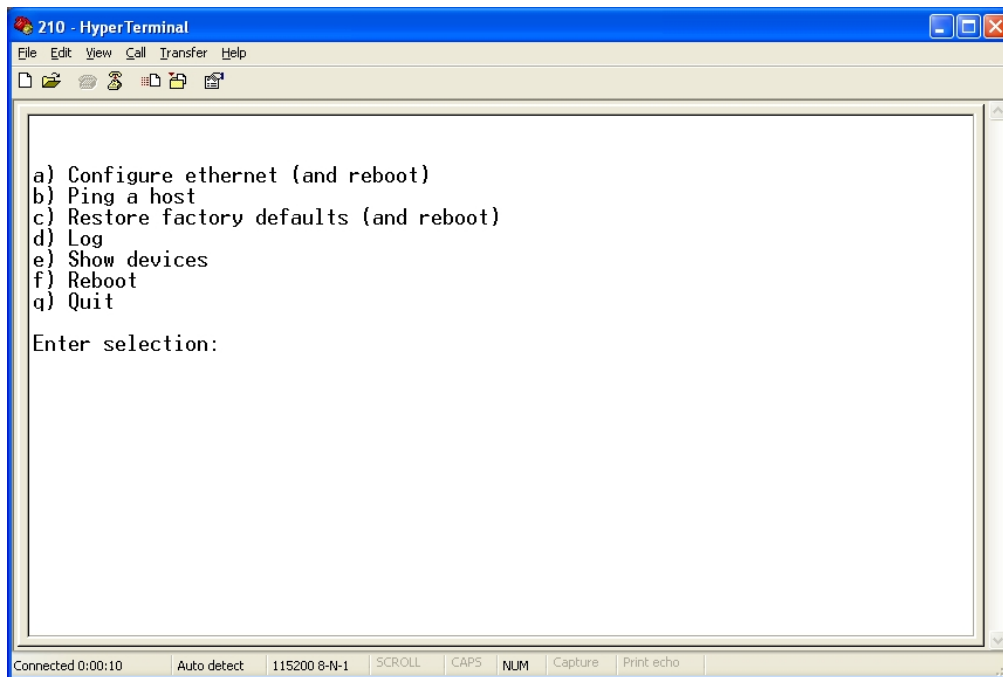


Figure 4: USB/Serial Interface Menu