

### Horizon HTTPS Setting

Enabling the HTTPS setting will allow you to connect to the Web Configuration Page via an HTTPS IP Address instead of the normal HTTP address.

1. Access the ESTeem Web page using your computer's web browser of choice. Select **Advanced** Tab. From the **Global Settings** section, select **Remote Access & Services** (Figure 1) and push the **Next** button.

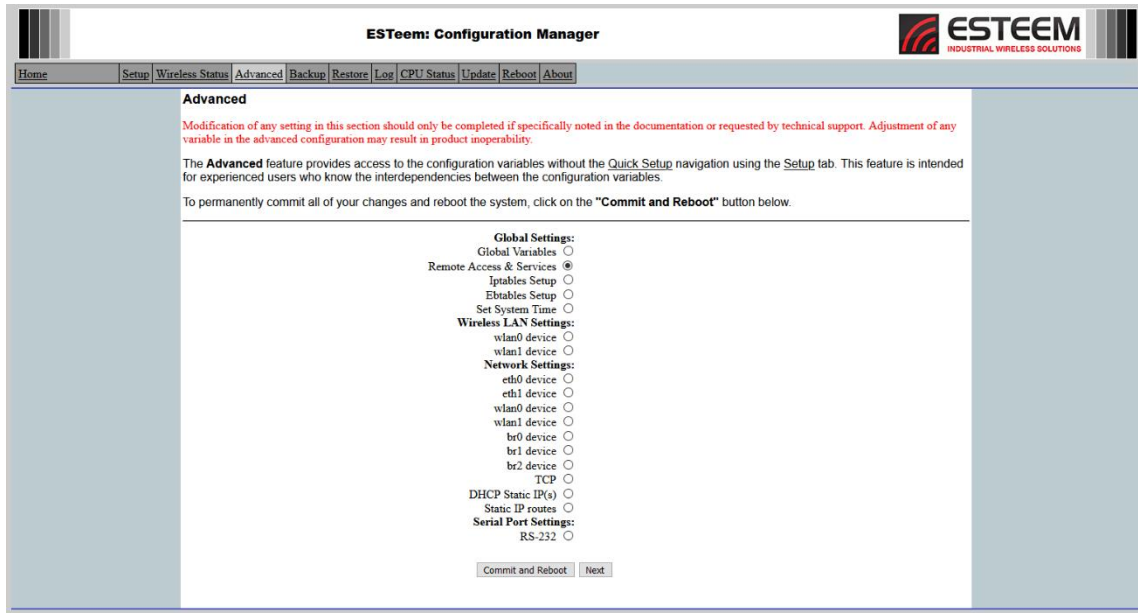


Figure 1: Advanced Screen

2. Select **HTTPS Service** (Figure 2) and push the **Setup** button.

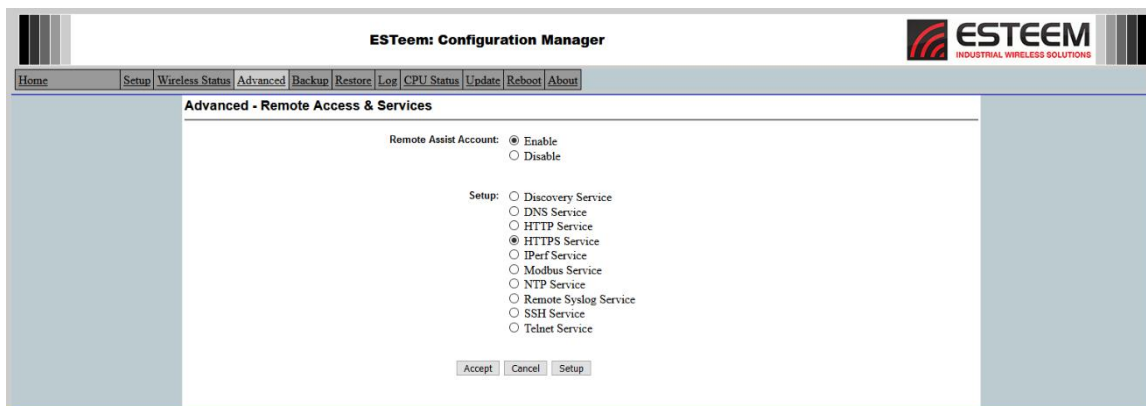


Figure 2: HTTPS Service

3. Enable the HTTPS Service by selecting **On** then return to the previous menu by selecting **Accept**. (Figure 3)

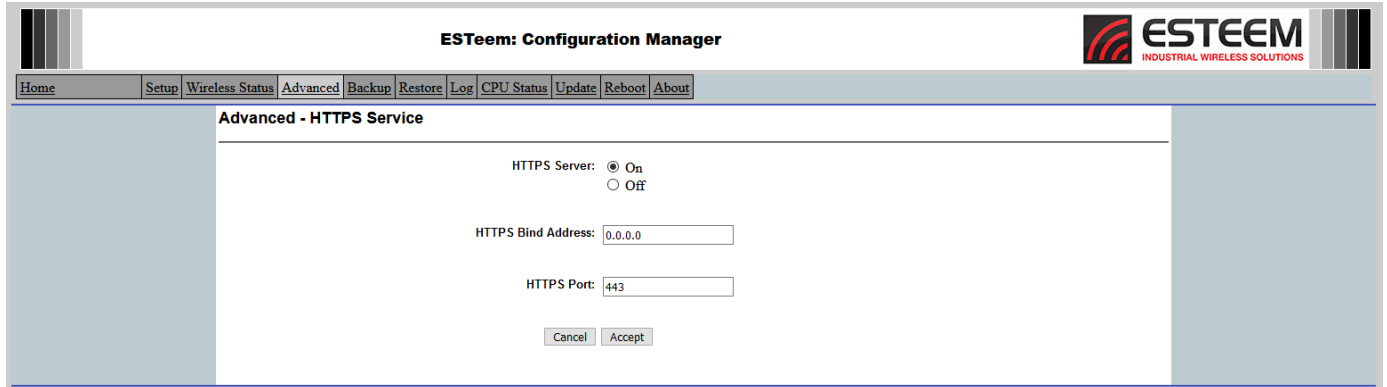


Figure 3: Wireshark Plugin

- **Note:** You can bind the HTTPS to a specific IP Address and Port if you wish, by default it will match the IP Address configured for the radio.

4. Select **Accept** one more time to return to the **Advanced** page. Then select **Commit and Reboot** (Figure 4). The radio will then reboot, and you can access the HTTPS version of the radio.

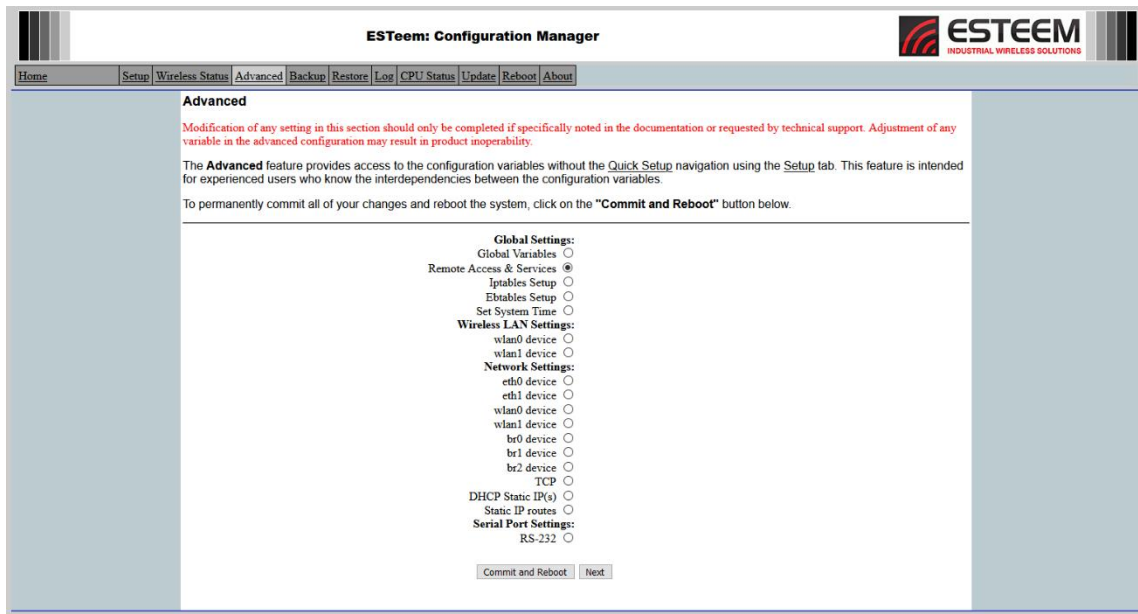


Figure 4: Commit and Reboot