

Horizon Series Software Update – July 2023

(swupdate-horizon-202306260923)

New Features

In this software update, the following new features were implemented:

Troubleshooting Features – The Horizon series radio has added the ability to modify the operation of wireless links to best suit the application. The Horizon can be configured for static peer links, disabling beacons/beacon responses and disabling batch acknowledgements.

Network Optimization – The Horizon radios can now be configured to match the Spanning Tree Protocol (STP) of the connected Ethernet network to eliminate incompatibilities. The Horizon can now be configured to isolate the spanning tree operations of the wireless MESH networking from the connected Ethernet networks.

Update Procedure

The software update can be completed using the Discovery Utility, ESTeem Networking Suite or web interface. This procedure will update the radios using the web interface to integrate the security update and new features. To complete the software update you will need the following update file either sent by ESTeem support or available for download from our web page at <https://www.esteem.com/firmware>

swupdate-horizon-202306260923.img (Firmware Update Image)

Operating System Update

1. To update the operating system software, open the Horizon radio's web interface with any web browser and select Software Update (Figure 1). Select "Software update image file" and press the *Next* button.

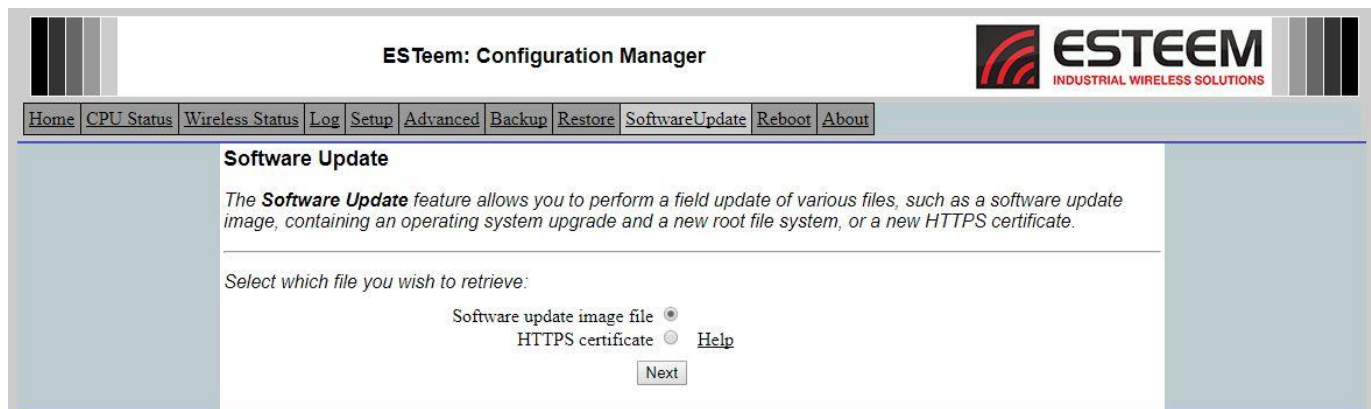


Figure 1: Software Update

1. Select "Upload via web browser" and press the *Next* button.
2. Press the *Choose File* button and select the **swupdate-horizon-202306260923.img** file from the location it was saved on the computer. The file name will be displayed in the "software image path". Press the *Upload File* button and Figure 2 will be displayed.

3. Press the *Validate and Update* button to verify the integrity of the update file and complete the software update. The software update will take approximately 2 minutes to complete the update.

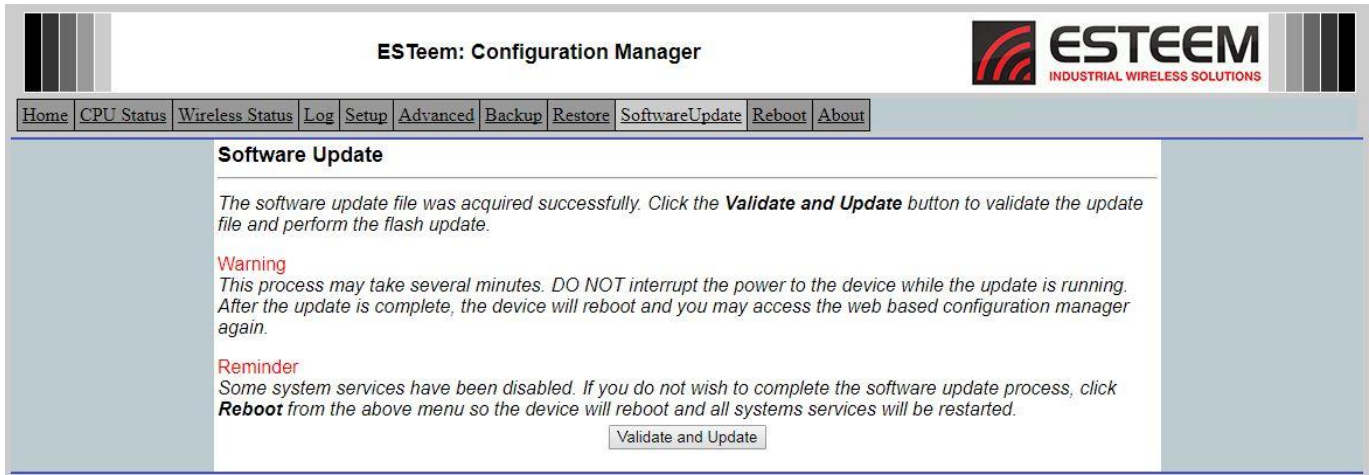


Figure 2: Validate and Update