

Horizon 5.8

The **ESTeem Horizon 5.8** is a ruggedized, industrial 5.8Ghz wireless device built to be an essential component of the burgeoning industrial communications infrastructure. The **ESTeem Horizon 5.8** provides unsurpassed broadband speeds (to 300Mbps) and range to deliver the reliable, isolated and secure wireless networks required today to provide complete connectivity to critical IT, operations control systems and remote asset data. Scalable Wireless networking over large geographical areas become a reality using the Horizon **IndustrialMESH** technology.



Key Features

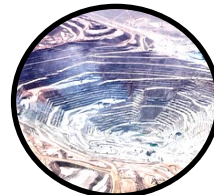
- ESTeem's scalable 5.8Ghz **IndustrialMESH** technology enables redundant, self-healing networks to provide dependable and stable communications in extreme environmental conditions.
- ESTeem's exclusive **Dual Wi-Bridge** mode enables two isolated wireless bridged networks to run side-by-side, delivering two independent networks that seamlessly flow across a common wireless infrastructure for secure and segmented networking.
- Same device can be used for master, repeater and remote locations enabling superior network flexibility and scalability
- Highly Secure (AES) encryption
- 802.11a/n Compatible
- High-speed connectivity to provide bandwidth for your network data, control and video applications
- Ethernet and serial communications
- Simplified configuration
- ESTeem Memory Module stores configuration information for rapid deployment or replacement
- *Optional GPS Module* for location tracking
- ESTeem 195Ea compatible



Water/Wastewater



Oil & Gas



Mining



Power & Energy



Material Handling



Factory Floor

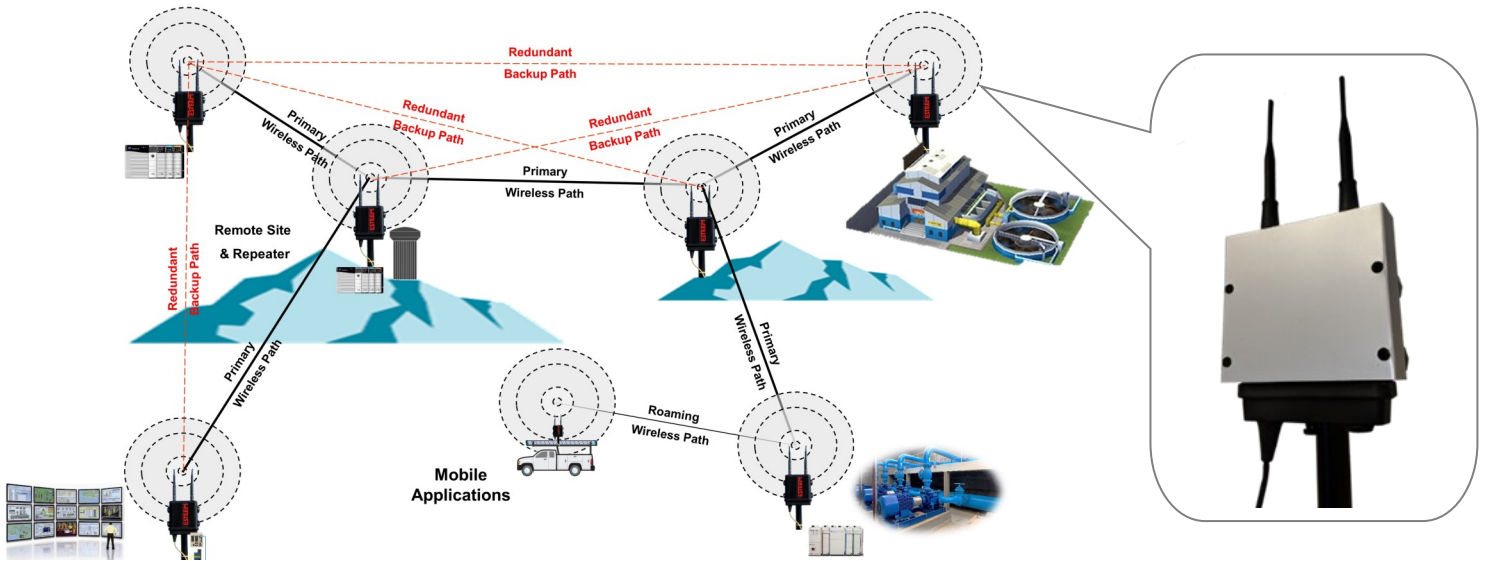


Agriculture



Infrastructure

Horizon 5.8



ESTeem Horizon 5.8 Specifications

Transmitter/Receiver	
Frequency of Operation (Software Selectable)	5.745 to 5.825 GHz (17-channels)
RF Data Rate	6 to 300 Mbps
Tx Output Power (Software Selectable)	250 mW (24dBm)
Channel Bandwidth	5 MHz, 10 MHz, 20 MHz or 40 MHz
Tx Output Impedance	50 ohms
Rx Sensitivity	-93 to -73 dBm
FCC Type Acceptance	TV7R11E5HND
Industry Canada Type Acceptance	Not Approved
LED Indicators	Power (On/Off) - Status (On/Off) - Transmitter (On/Off) - Receiver (On/Off)
Power Requirements	
Receive	250 ma @ 12 VDC
Transmit	1.25 A @ 12 VDC
PoE Power Supply	(IEEE 802.3at,30 watts) (opt)
External Power Input	10 to 16 VDC @ 1.5 A
Input/Output Connectors	
Ethernet Port 1 (10/100/1000)	RJ-45 Female
Ethernet Port 2 (10/100/1000)	
802.11 Compatibility	802.11n/a
RS-232C Data Port (2,400 to 115.2 K baud)	RJ-45 Female
RS-232C Programming Port (115,200,N,8,1)	
Antenna Input/Outputs	TNC Reverse Female
External DC Input Power	Mini-Combicon, 3-pin Female
Case	
Temperature Range	-30° to +60° C
Humidity	95% Non-condensing
Dimensions	1.9 in. H x 6.7 in. W x 6.2 in. L
Weight	1.25 lbs.
Product Warranty	1 Year
Other	
Outdoor Pole Mt. Kit	AA195PM (NEMA4 Rating When Used)
PoE Power Supply	AA175.5 (opt)
GPS Location	Optional (Factory Installed)
Security	WPA2, WPA, AES-128/256, TKIP, WEP-64/128 MAC ID filter