

Edge 900

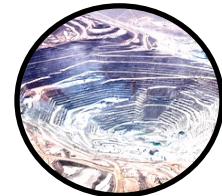
The **ESTeem Edge 900** is a ruggedized, industrial wireless device built to be an essential component of the burgeoning industrial communications infrastructure. The **ESTeem Edge 900** delivers the reliable, isolated and secure wireless networks required today to provide complete connectivity to critical IT, operations control systems and remote asset data. No bells and whistles....just solid performance you can count on at a budget friendly price. Private and Secure.



Water/Wastewater



Oil & Gas



Mining



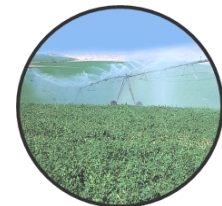
Power & Energy



Material Handling



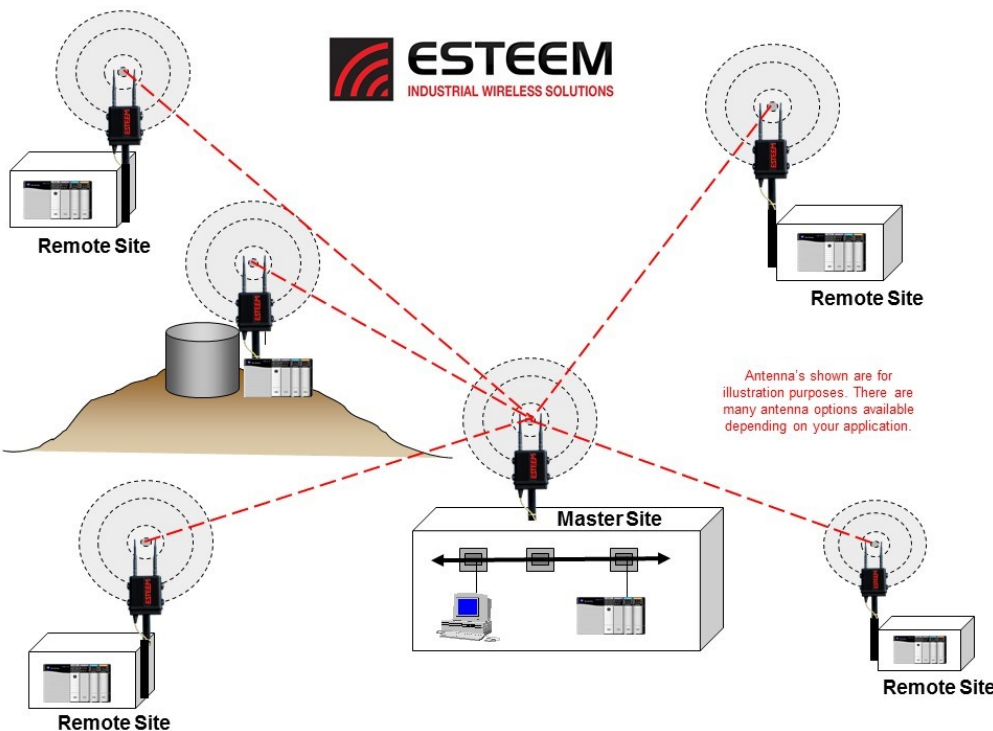
Factory Floor



Agriculture

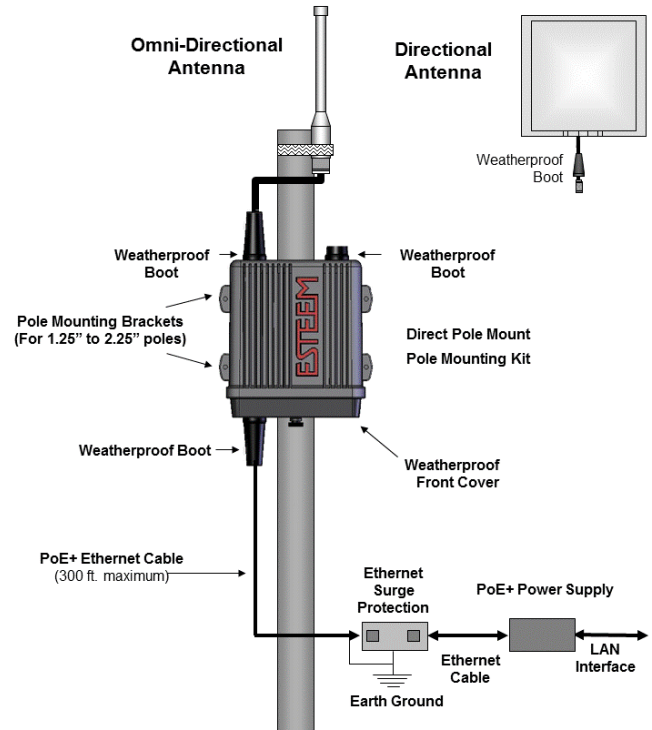


Infrastructure



Direct Pole Mounting

- **Outdoor Case Design - NEMA 4 case allows direct pole-mounting in harsh environments**
- **Eliminates costly RF coaxial feedlines and signal losses**
- **Increases Range and Performance**
- **Quicker and easier installations**



ESTEEM Edge 900 Specifications

ESTEEM Edge 900 Specifications	
Transmitter/Receiver	
Frequency of Operation	902-928 MHz (15 Channels)
RF Data Rate	1 Mbps
Tx Output Power (Software Selectable)	27dBm
Tx Output Impedance	50 ohms
Rx Sensitivity	-97 dBm
FCC Type Acceptance	ENPEDG217ES
Industry Canada Type Acceptance	2163A-217ES
LED Indicators	Power (On/Off) - Carrier Detect (On/Off) - Transmitter (On/Off) - Receiver (On/Off)
Power Requirements	
Receive	250mA @ 12 VDC
Transmit	800mA @ 12 VDC
PoE Power Supply	(IEEE 802.3af - Mode B) (opt)
External Power Input	10 to 16 VDC @ 1A
Input/Output Connectors	
Ethernet Port 1 (10/100/1000)	RJ-45 Female
RS-232C Comm Port (2,400 to 115.2 K baud)	RJ-45 Female
Antenna Input/Outputs	TNC Reverse Female
External DC Input Power	Mini-Combicon, 3 pin female
Case	
Temperature Range	-30° to +60° C
Humidity	95% Non-condensing
Dimensions	1.9 in. H x 6.7 in. W x 6.2 in. L
Weight	1.25 lbs.
Product Warranty	1 Year
Other	
Outdoor Pole Mt. Kit	AA195PM (opt)
PoE Power Supply	AA173 (opt)
Security	AES-256