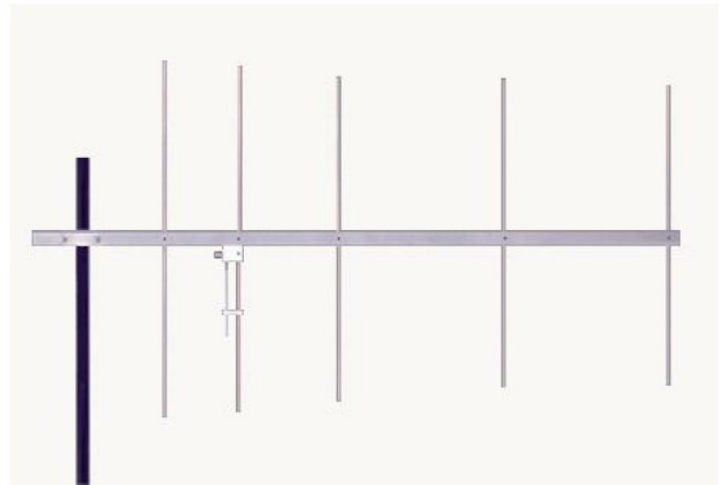
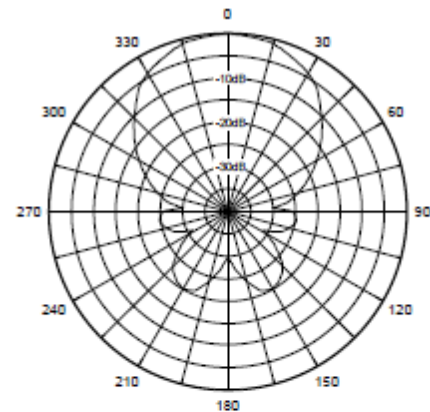


Directional VHF Antenna

- Applications:** Fixed base mounting.
- Antenna Type:** Directional, 5 Element Yagi
- Frequency:** 210-225 MHz
- Polarization:** Vertical or Horizontal
- Impedance:** 50 ohms
- Gain:** 9 dBd
- VSWR:** <2:1
- Horizontal Beamwidth:** 60 degrees
- Vertical Beamwidth:** 50 degrees
- Antenna Material:** 1" aluminum U channel boom with 3/8" solid elements.
- Boom Length (in.):** 55
- Recommended Mounting Hardware:** Stainless steel double V-bolt (included) for mounting to 2.50" diameter pipe.
- Antenna Connector:** N Female
- Maximum Power Input:** 300 Watts
- Antenna Envelope:** 55 in. length by 27 in. width
- Windload Survival:** 125 mph
- Wind Load:** .36.8lbs
- Weight:** 6 lbs.



Vertical Pattern



Horizontal Pattern

