



ESTeEM

INDUSTRIAL WIRELESS SOLUTIONS

Horizon 900

The **ESTeem Horizon 900** is a ruggedized, industrial 900Mhz wireless device built to be an essential component of the burgeoning industrial communications infrastructure. The **ESTeem Horizon**

900 provides unsurpassed broadband speeds (to 72 Mbps) and range to deliver the reliable, isolated and secure wireless networks required today to provide complete connectivity to critical IT, operations control systems and remote asset data. Scalable Wireless networking over large geographical areas become a reality using the Horizon **IndustrialMESH** technology.



Key Features

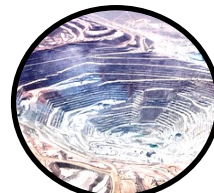
- ESTeem’s scalable 900Mhz **IndustrialMESH** technology enables redundant, self-healing networks to provide dependable and stable communications in extreme environmental conditions.
- ESTeem’s exclusive **Dual Wi-Bridge** mode enables two isolated wireless bridged networks to run side-by-side, delivering two independent networks that seamlessly flow across a common wireless infrastructure for secure and segmented networking.
- Same device can be used for master, repeater and remote locations enabling superior network flexibility and scalability
- Highly Secure (AES) encryption
- High-speed connectivity to provide bandwidth for your network data, control and video applications
- Ethernet and serial communications
- Simplified configuration
- ESTeem Memory Module stores configuration information for rapid deployment or replacement
- *Optional GPS Module* for location tracking
- ESTeem 195Ed compatible



Water/Wastewater



Oil & Gas



Mining



Power & Energy



Material Handling



Factory Floor



Agriculture



Infrastructure

ESTeem Industrial Wireless Solutions

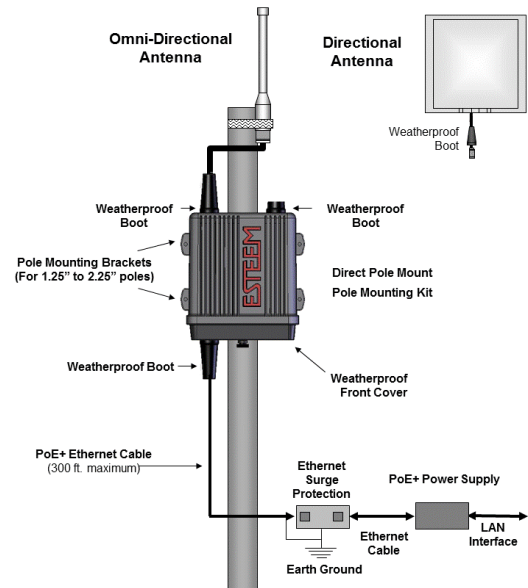
www.esteem.com
Phone (509) 735-9092

Revised: 11 Dec 2018

Horizon 900

Direct Pole Mounting

- **Power over Ethernet (PoE+)** connectivity for remote, or hard-to-wire areas to help minimize hardware and cabling costs
- **Outdoor NEMA 4 Case** allows direct pole-mounting in harsh environments
- **Extended temperature range**
- **Increases Range and Performance**
- **Quicker and easier installations**



ESTEem Horizon 900 Specifications

ESTEem Horizon 900 Specifications	
Transmitter/Receiver	
Frequency of Operation (Software Selectable)	902-928 MHz (4-channels)
RF Data Rate	1 to 72.2 Mbps
Tx Output Power (Software Selectable)	1 Watt (30dBm)
Channel Bandwidth	5 MHz, 10 MHz or 20 MHz
Tx Output Impedance	50 ohms
Rx Sensitivity	-93 to -64
FCC Type Acceptance	ENPHZN216AD
Industry Canada Type Acceptance	2163A-216AD
LED Indicators	Power (On/Off) - Carrier Detect (On/Off) - Transmitter (On/Off) - Receiver (On/Off)
Power Requirements	
Receive	600ma @ 12 VDC
Transmit	1.350A (Cont) 3A (Peak) @ 12 VDC
PoE Power Supply	(IEEE 802.3at, 30 watts) (opt)
External Power Input	10 to 16 VDC @ 3A
Input/Output Connectors	
Ethernet Port 1 (10/100/1000)	RJ-45 Female
Ethernet Port 2 (10/100/1000)	
802.11 Compatibility	n/a
RS-232C Comm Port (2,400 to 115.2 K baud)	RJ-45 Female
RS-232C Programming Port (38,400, N, 8, 1)	
Antenna Input/Outputs	TNC Reverse Female
External DC Input Power	Mini-Combicon, 3 pin female
Case	
Temperature Range	-30° to +60° C
Humidity	95% Non-condensing
Dimensions	1.9 in. H x 6.7 in. W x 6.2 in. L
Weight	1.25 lbs.
Product Warranty	1 Year
Other	
Outdoor Pole Mt. Kit	AA195PM (opt)
PoE Power Supply	AA175.2 (opt)
Security	WPA2, WPA, AES-128/256, TKIP, WEP-64/128 MAC ID filter