



# ESTeem

SECURE WIRELESS NETWORKING

## Horizon Series



### Key Features

900MHz, 2.4GHz and 5.8GHz frequency options

Reliable Dynamic *IndustrialMESH* Networking

High-speed connectivity (up to 300 Mbps) to provide bandwidth for today and tomorrow's networking demands

Edge-to-Edge AES-256 Cybersecurity

Scalable, Cost Effective, and Future Proof

Simple configuration - Build and manage secure OT infrastructure in minutes

Layer 2 *AND* Layer 3 network support

Fixed location & Mobile modes of operation

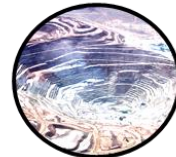
[ESTeem 195E Series compatible]



Water/Wastewater



Oil & Gas



Mining



Power & Energy



Material Handling



Factory Floor



Agriculture

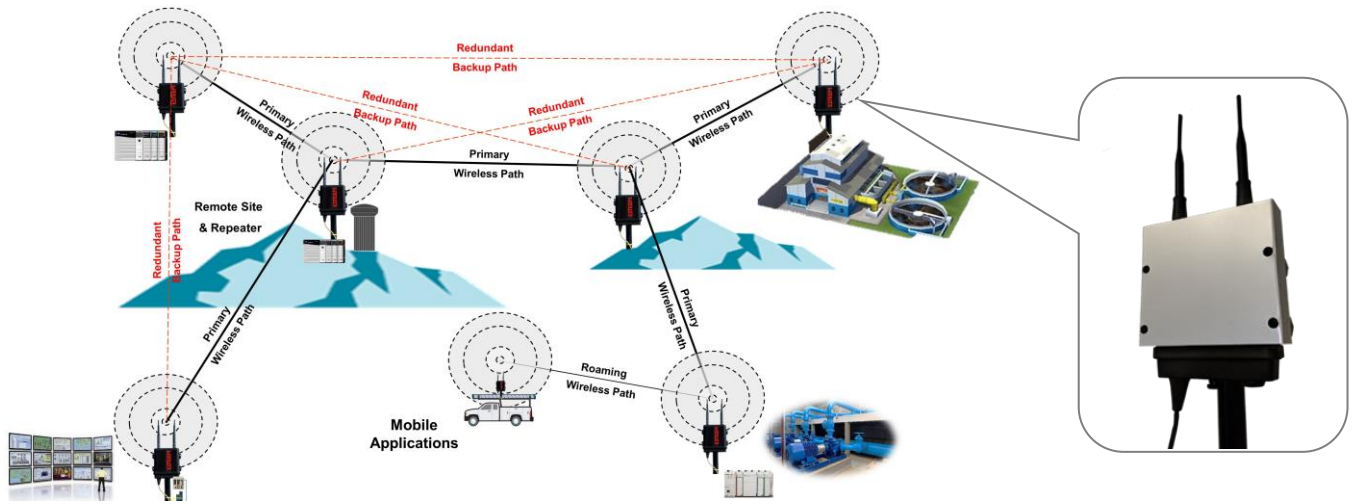


Infrastructure



The **ESTeem Horizon** is a ruggedized, industrial wireless device built to be an essential component of the demanding industrial communications infrastructure.

The **ESTeem Horizon** provides unsurpassed speed and range to deliver the reliable, isolated and secure wireless networks required today to provide complete connectivity to critical IT, operations, control systems, and remote asset data.

# Horizon Series



## ESTeem Horizon Series Specifications

Transmitter/Receiver	Horizon 900	Horizon 2.4-MIMO 	Horizon 5.8 
Frequency of Operation (Software Selectable)	902-928 MHz (4 Channels)	2.4 GHz (11-channels)	5.8 GHz (17-channels)
RF Data Rate	1 to 72.2 Mbps	1 to 300 Mbps	6 to 300 Mbps
Max Tx Output Power (Software Selectable)	1 Watt (30dBm)	500 mW (27dBm)	250 mW (24dBm)
Channel Bandwidth	5, 10 or 20 MHz	5, 10, 20 or 40 MHz	5, 10, 20 or 40 MHz
Tx Output Impedance	50 ohms		
Rx Sensitivity	-93 dBm	-93 dBm	-93 dBm
FCC Type Acceptance	ENPHZN216AD	TV7R11E2HPND	TV7R11E5HND
Industry Canada Type Acceptance	2163A-216AD	7442A-R11E2HPND	Not Approved
LED Indicators	Power (On/Off) - Status (On/Off) - Transmitter (On/Off) - Receiver (On/Off)		
<b>Power Requirements</b>			
Receive	600 ma @ 12 VDC		
Transmit	1.25 A @ 12 VDC		
PoE Power Supply	(IEEE 802.3at,30 watts) (opt)		
External Power Input	10 to 16 VDC @ 1.5 A		
<b>Input/Output Connectors</b>			
Ethernet Port 1 (10/100/1000)	RJ-45 Female		
Ethernet Port 2 (10/100/1000)	RJ-45 Female		
802.11 Compatibility	n/a	802.11n/g/b	802.11n/a
RS-232C Data Port (2,400 to 115.2 K baud)	RJ-45 Female		
RS-232C Programming Port (115,200,N,8,1)	RJ-45 Female		
Antenna Input/Outputs	TNC Reverse Female	TNC Reverse Female	
External DC Input Power	Mini-Combicon, 3-pin Female		
<b>Case</b>			
Temperature Range	-30° to +60° C		
Humidity	95% Non-condensing		
Dimensions	1.9 in. H x 6.7 in. W x 6.2 in. L		
Weight	1.25 lbs.		
Product Warranty	1 Year		
<b>Other</b>			
Outdoor Pole Mt. Kit	AA195PM (NEMA4 Rating When Used)		
GPS Location	Optional (Factory Installed)		
PoE Power Supply	AA175.5 (opt)		
Security	WPA2, WPA, AES-128/256, TKIP, WEP-64/128 MAC ID filter		

**ESTeem Secure Wireless Networking**

www.esteem.com

Phone (509) 735-9092

Revised: 28 Sept 2022