



# ESTeEM

SECURE WIRELESS NETWORKING



## Horizon 5.8 (MIMO)

### Key Features

License-Free 5.8 GHz frequency



Reliable Dynamic *IndustrialMESH* Networking

High-speed connectivity (up to 300 Mbps) to provide bandwidth for today and tomorrow's networking demands

Edge-to-Edge AES-256 Cybersecurity

Scalable, Cost Effective, and Future Proof

Simple configuration - Build and manage secure OT infrastructure in minutes

Layer 2 *AND* Layer 3 network support

Fixed location & Mobile modes of operation

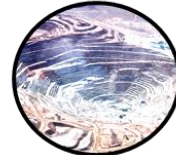
[ESTeem 195Ea Series compatible]



Water/Wastewater



Oil & Gas



Mining



Power & Energy



Material Handling



Factory Floor



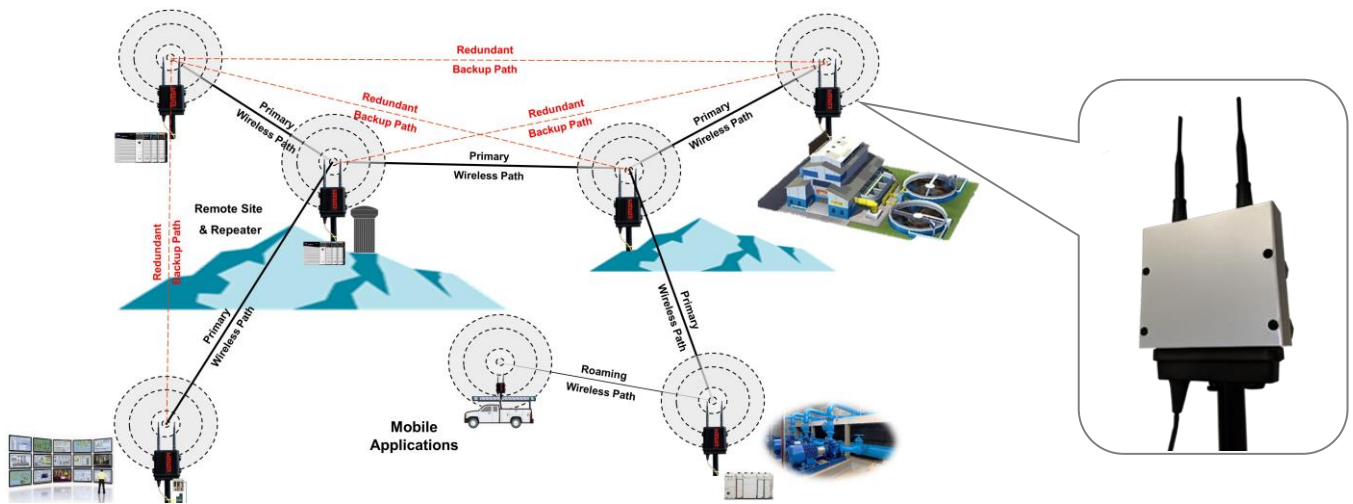
Agriculture




Infrastructure

The **ESTeem Horizon 5.8** is a ruggedized, industrial wireless device built to be an essential component of the demanding industrial communications infrastructure.

The **ESTeem Horizon 5.8** provides unsurpassed speed and range to deliver the reliable, isolated and secure wireless networks required today to provide complete connectivity to critical IT, operations, control systems, and remote asset data.



## ESTeem Horizon 5.8 Specifications

Transmitter/Receiver	
Frequency of Operation (Software Selectable)	5.745 to 5.825 GHz (17-channels)
RF Data Rate	6 to 300 Mbps
Tx Output Power (Software Selectable)	250 mW (24dBm)
Channel Bandwidth	5 MHz, 10 MHz, 20 MHz or 40 MHz
Tx Output Impedance	50 ohms
Rx Sensitivity	-93 dBm
FCC Type Acceptance	TV7R11E5HND
Industry Canada Type Acceptance	Not Approved
LED Indicators	Power (On/Off) - Status (On/Off) - Transmitter (On/Off) - Receiver (On/Off)
Power Requirements	
Receive	250 ma @ 12 VDC
Transmit	1.25 A @ 12 VDC
PoE Power Supply	(IEEE 802.3at,30 watts) (opt)
External Power Input	10 to 16 VDC @ 1.5 A
Input/Output Connectors	
Ethernet Port 1 (10/100/1000)	RJ-45 Female
Ethernet Port 2 (10/100/1000)	
802.11 Compatibility	802.11n/a 
RS-232C Data Port (2,400 to 115.2 K baud)	RJ-45 Female
RS-232C Programming Port (115,200,N,8,1)	
Antenna Input/Outputs	TNC Reverse Female
External DC Input Power	Mini-Combicon, 3-pin Female
Case	
Temperature Range	-30° to +60° C
Humidity	95% Non-condensing
Dimensions	1.9 in. H x 6.7 in. W x 6.2 in. L
Weight	1.25 lbs.
Product Warranty	1 Year
Other	
Outdoor Pole Mt. Kit	AA195PM (NEMA4 Rating When Used)
PoE Power Supply	AA175.5 (opt)
GPS Location	Optional (Factory Installed)
Security	
	WPA2, WPA, AES-128/256, TKIP, WEP-64/128 MAC ID filter