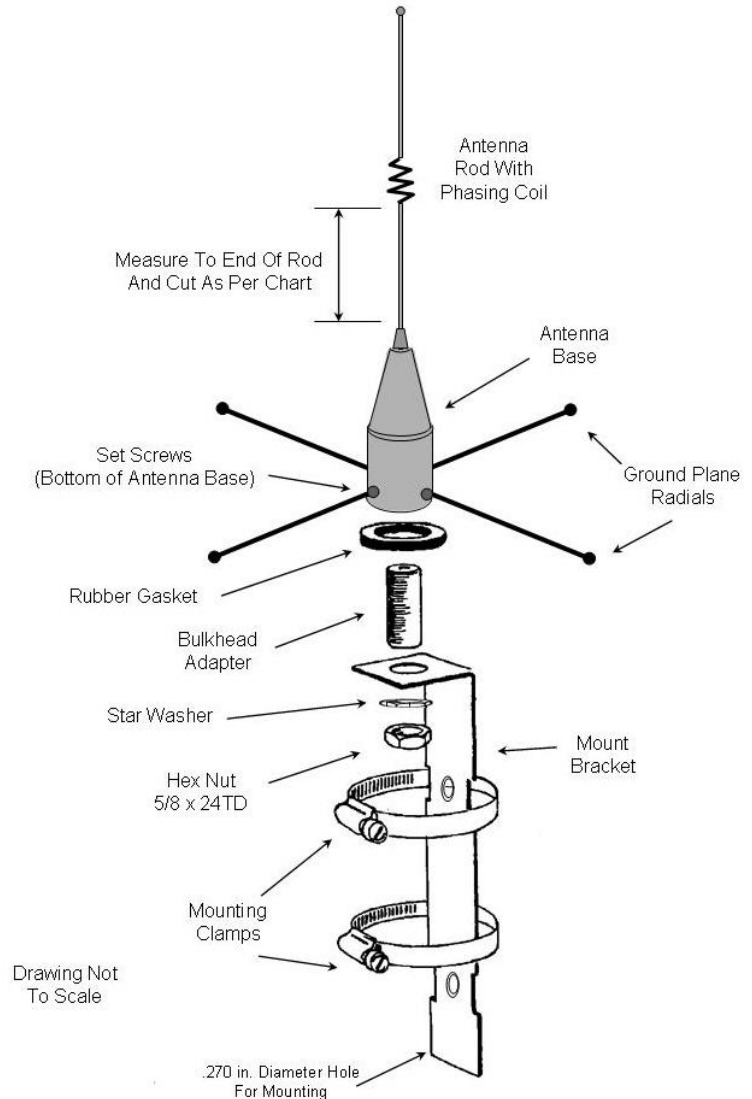


**Measuring the Rod Length:** Precise cutting of the rod supplied with your AA20.1 antenna is necessary to assure maximum efficiency and lowest reflected power. The dimensions shown on the cutting chart are for the portion of the rod below the phasing coil. The rod above the coil is correct as is comes from the factory. Do not change this upper rod. The rod length indicated on the chart refers to the length of the rod from bottom of the phasing coil to the end of the rod.

**Assembly Instructions:** Please read all instructions carefully.

1. Select frequency from cutting chart.
2. Remove whip from base by loosening the set screw with the enclosed Allen wrench.
3. Trim bottom section of whip (below open phasing coil section) to appropriate length for frequency desired as indicated in cutting chart. **Note: After trimming the rod to the appropriate length, remove the black paint on the bottom end of the rod (approximately ½") to ensure proper contact.**
4. Reinstall whip in antenna base, using Allen wrench to tighten set screw.
5. Remove hex nut, star washer and rubber gasket from threaded bulkhead adapter on bottom of antenna (See Figure 1).
6. Insert ground radials into holes on base of antenna. Tighten set screws on under side of antenna base. Reinstall the rubber washer onto the base of the antenna.
7. Return rubber washer to position on base of antenna.
8. Attach the heavy duty mounting bracket by sliding over threaded bulkhead adapter, followed by star washer and hex nut. Tighten firmly.



**Figure 1: Exploded View**

Cutting Chart	
Frequency	Rod Length
450 MHz	7 Inches
455 MHz	6 ¾ Inches
460 MHz	6 ½ Inches
465 MHz	6 ¼ Inches
470 MHz	6 Inches